

THIS IS NOT A CIRCULAR

Surrey Highways

Merrow Lane

Guildford

Surrey

GU4 7BQ

18 October 2024

Dear homeowner or occupier,

We will start work on Monday 21 October under an emergency closure 24/7 for 7 days on Station Road Betchworth

We apologise for the disruption caused by the temporary lights in place due to the collapsed gully on Station Road, Betchworth. We are currently coordinating an extensive drainage maintenance and repair scheme to address the underlying issue.

To ensure the safety of the road network and all road users, temporary traffic lights have been installed at this location and are manually controlled at peak times, while we resource and programme the delivery of this scheme. We understand that the traffic lights may cause some disruption, and we apologise for any inconvenience this may cause.

Background information

Drainage investigation works took place on 05/01/2024 at the bottom of Pebble Hill on Station Road, Betchworth. The aim of the investigation was to find out all the causes of rainwater ponding and failing gully at the bottom of the hill and to find a deliverable and affordable maintenance solution.

The investigation, carried out by experienced and knowledgeable drainage engineers, showed that there were blockages in the connecting pipework between the gullies as well as damage to the connection to the gully. The pipework needs to be replaced otherwise, during times of heavy rainfall, the drainage system will not be effective, and more rainwater will go down the road surface and pond at the bottom of the hill.

Planned work will include excavating the road to replace 65.5m of the existing pipework with new pipework and connect 2 of the drainage gullies into the drainage system.

Without this new connection the flooding issues are expected to continue, and the gully will repeatedly fail causing emergency closures or temporary signals to be used at this location.

This work must be completed under a full road closure traffic management to safely carry out the works in accordance with chapter 8 regulations of the Traffic Signs Manual. It is not possible to safely carry out this work using 2-way traffic signals, due to insufficient road space to create a safe working zone.

SURREY HIGHWAYS

Improving and investing in Surrey's Roads

FOLLOW US

-  @HighwaysSurrey
-  Surrey Highways
-  NextDoor in your area

We apologise for the time it is taking to organise the delivery of this scheme; planning a project with a closure of this duration on a strategic road involves a great deal of coordination.

Diversion route – this is a hard closure – no access will be granted through the works.

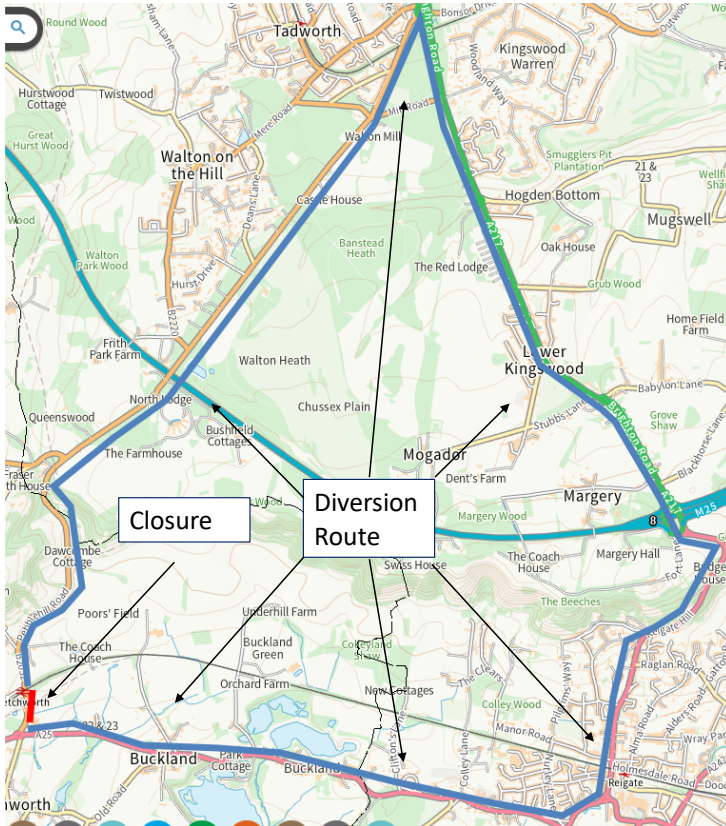
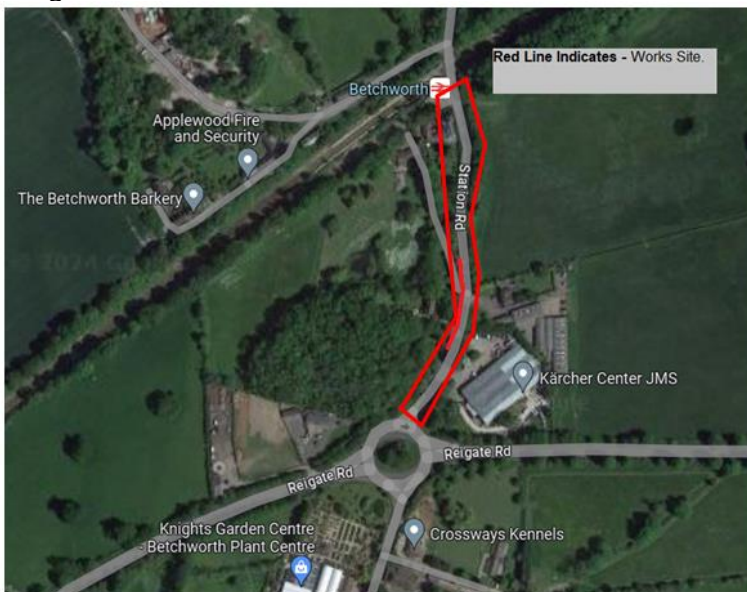


Image below shows the works area



SURREY HIGHWAYS

Improving and investing in Surrey's Roads

FOLLOW US

 @HighwaysSurrey

 Surrey Highways

 NextDoor in your area

It is expected that the crews will be working on site from 7am to 11pm to minimise the duration and disruption to residents and commuters.

If you have any further concerns, please do not hesitate to contact us via our website www.surreycc.gov.uk or you can reach us on 0300 200 1003.

Yours faithfully,

Amy Geoghegan

Works Communication Team Leader

Surrey Highways

Contact us

- **Telephone:** 0300 200 1003 (9am-5pm Monday – Friday)
- **Email:** contact.centre@surreycc.gov.uk
- **Textphone (via Relay UK):** 18001 0300 200 1003
- **Text (SMS):** 07860 053 465
- **British Sign Language:** www.surreycc.gov.uk/bsl



Please scan the QR code for news and updates about highways in your local area.